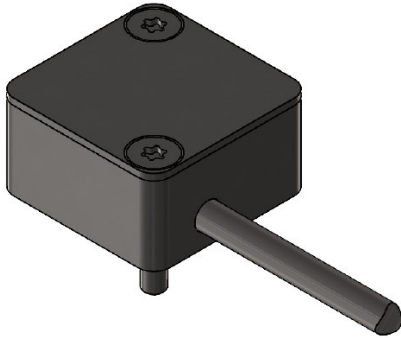


## **AE 10.305.010 Accelerometer for 3 axis**

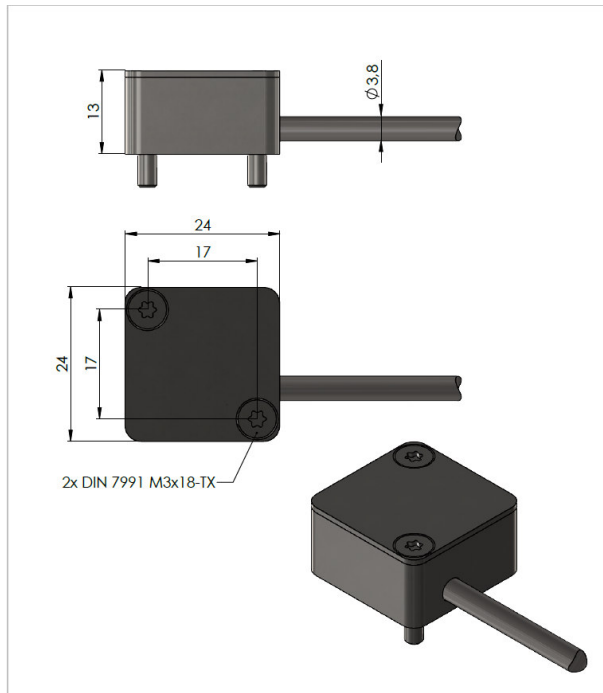


- accelerometer for vibration and bearing condition measurements in 3 axis
- Heavy-Duty-Version for harsh environment
- fix installed robust cable, PUR-coated
- 4-wire-cable with separate shield
- stainless steel housing with laser marking

### **Technical Specifications:**

Sensor Type	piezoelectric accelerometer (PZT/Shear)
Sensitivity	10 mV/g +/-10%
Resolution	0,01 g
Amplitude Range	max.500 g
Shock Resistance	max 5000 g
Frequency Response	0,5 - 10.000 Hz +/-3 dB (5.000 - 50.000 Hz for spike-energy-measurement)
Resonance Frequency	> 25 kHz
Power Supply	constant current 2 -10 mA; +18 to 28 V DC
Temperature Range	-40...+120°C
Housing	stainless steel
Dimensions	according to attached drawing
Mounting	with 2 screws M3x18 TX
Weight	ca. 40 gramm (without cable)
Shipping Weight	ca. 80 g (with 1m cable)
Connection Cable	4-wire, each 0,08 mm <sup>2</sup> , shielded, PUR coated, cable diameter ca. 3,8 mm
Ord.-No. / Cable Lengths / Cable End	AE10.305.010: ca. 1m, open cable end  (other cable lengths / connectors on request)

## Dimensions:



## Wiring Diagram:

X-Axis: green  
Y-Axis: yellow  
Z-Axis: white  
Ground: brown  
Shield: isolated from housing

**Option:** with connector XLR/5



## Connector Wiring:

Pin 1:	green	Signal X
Pin 2:	yellow	Signal Y
Pin 3:	white	Signal Z
Pin 4:	brown	Ground
Pin 5:		Shield

### **IBIS GmbH**

Werner-von-Siemens-Str. 21  
64319 Pfungstadt

**Tel:** (0)6157-949-370  
**Fax:** (0)6157-949-100

**www.ibis-gmbh.de**  
**info@ibis-gmbh.de**